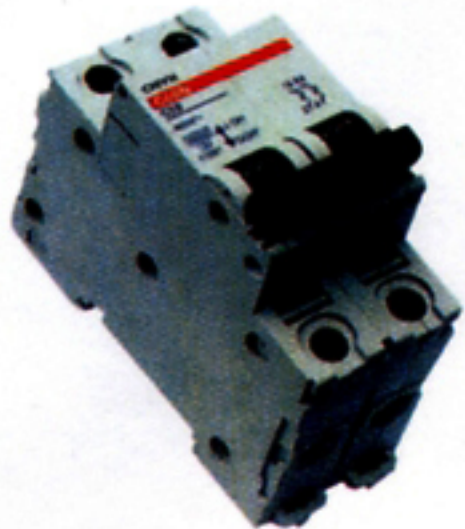
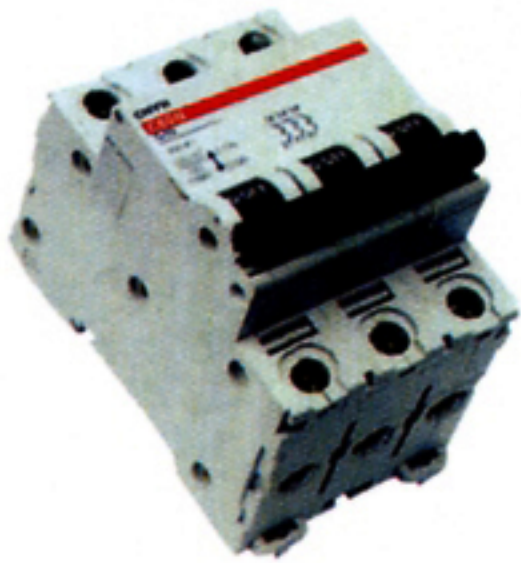


C60N 1P



C60N 2P

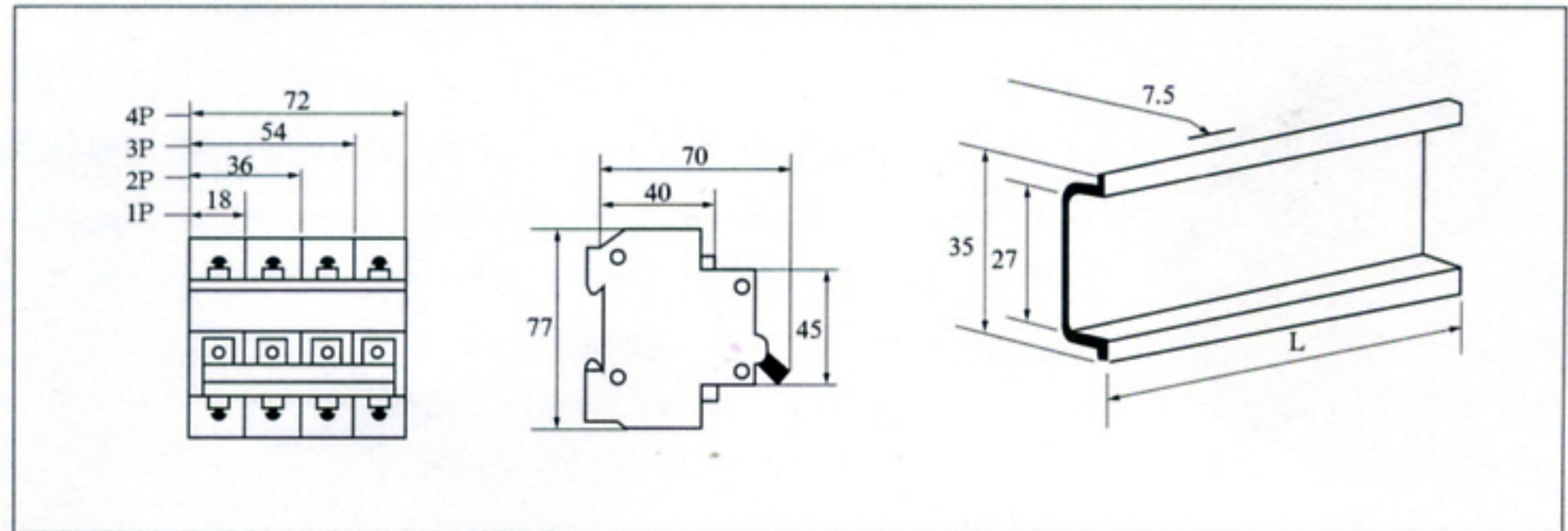


C60N 3P



C60N 4P

Dimension (mm)



C60N Mini Circuit Breaking

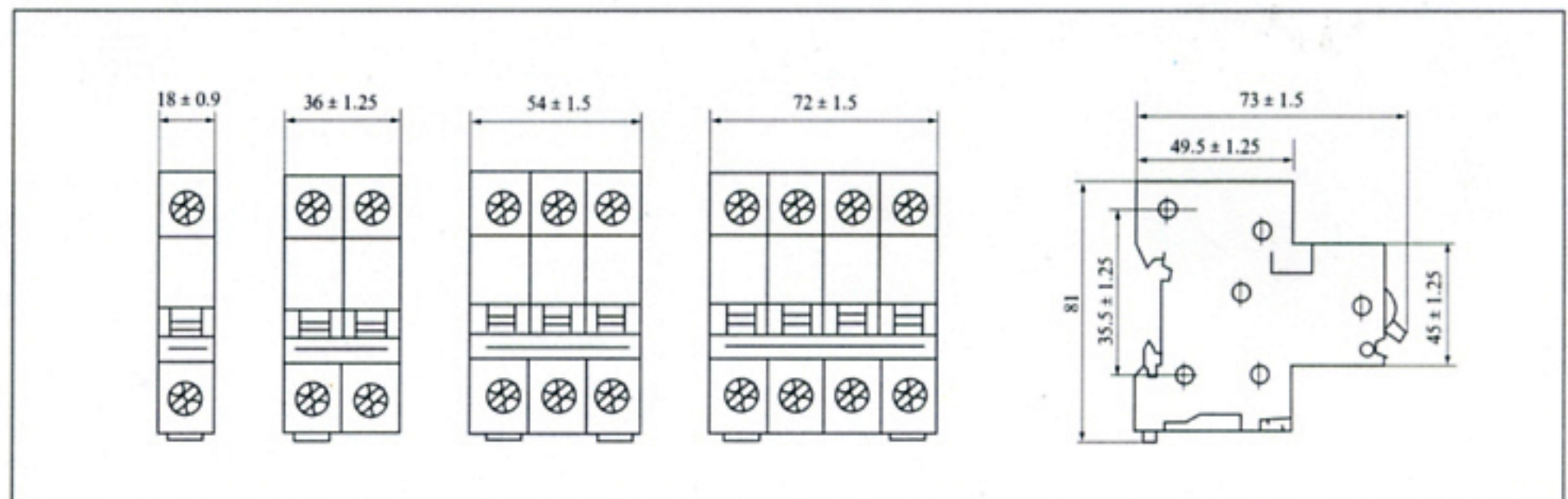
Application

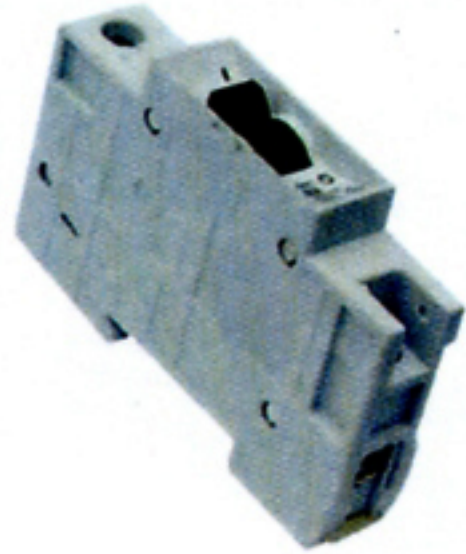
C60N series circuit breaker belongs to the advanced level of the nineties in the international instead of the old generation of C45N, and they also have many merits of high protective grade (up to IP20), high breaking capacity, good reliability of sensitive action convenient multi-pole assorting, long using life etc. They are mainly used for overload and short circuit protection within the circuit of AC 50Hz, 230V in single pole, 400V in double, three & four poles of lighting distribution system in industry & commerce. Meanwhile, they are also used in turning on or off the electric apparatus and lighting circuit under the normal condition.

Technical specification

Character	Standard	Rated current (A)	Pole	Voltage (V)	Breaking capacity (A)
B	IEC-898	1,2,3,4,5,6,	1	230/240	6000
		10,16,20,25,	2,3,4	400/415	6000
		32,40,50,63			
C			1	130	20000
				230/240	10000
D	IEC-947-2	1,2,3,4,5,6,	1	400/415	3000
		10,16,20,25,		230/240	20000
		32,40,50,63	2,3,4	400/415	10000
				44	6000

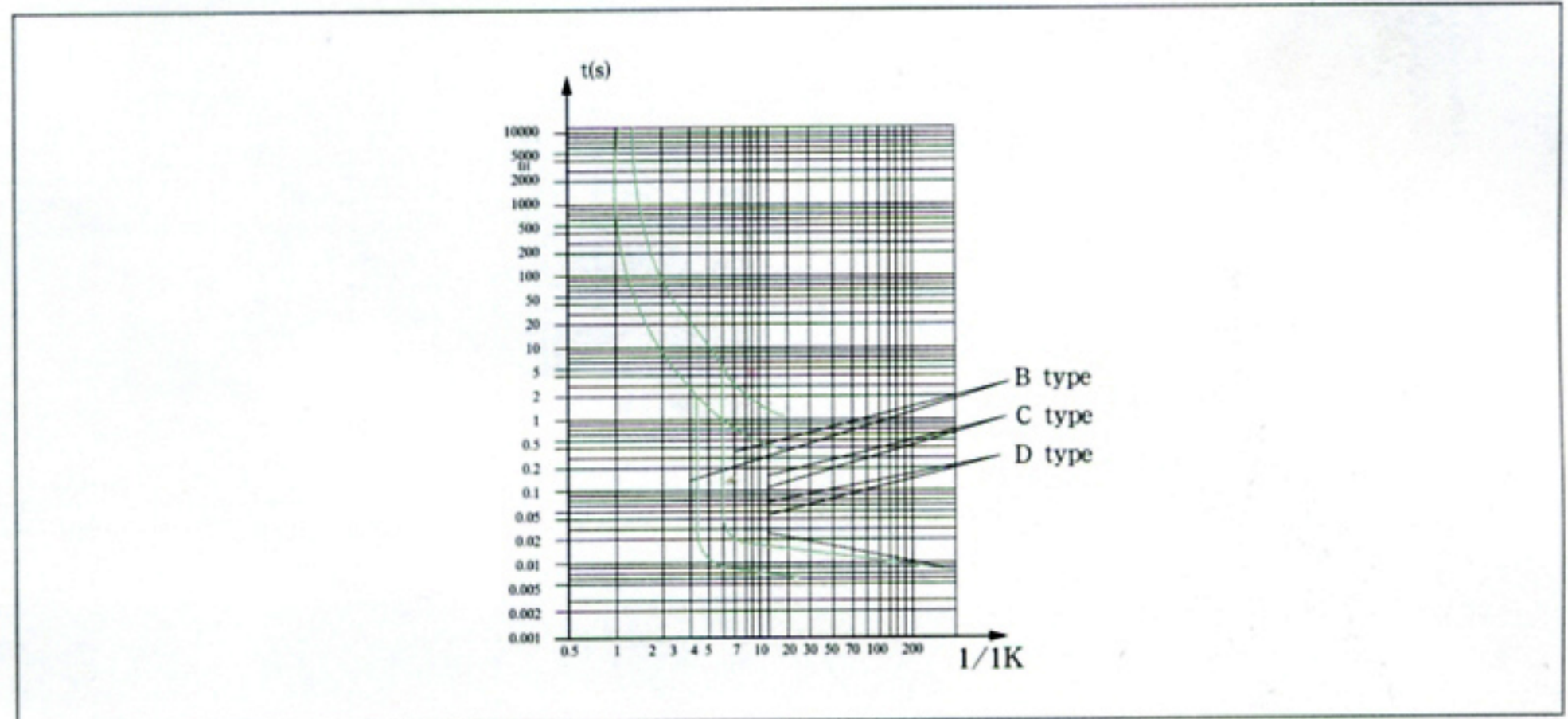
Dimension (mm)





K IP

Characteristic curve

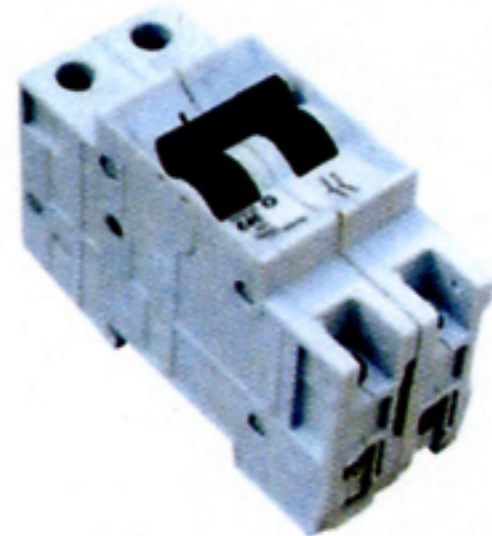
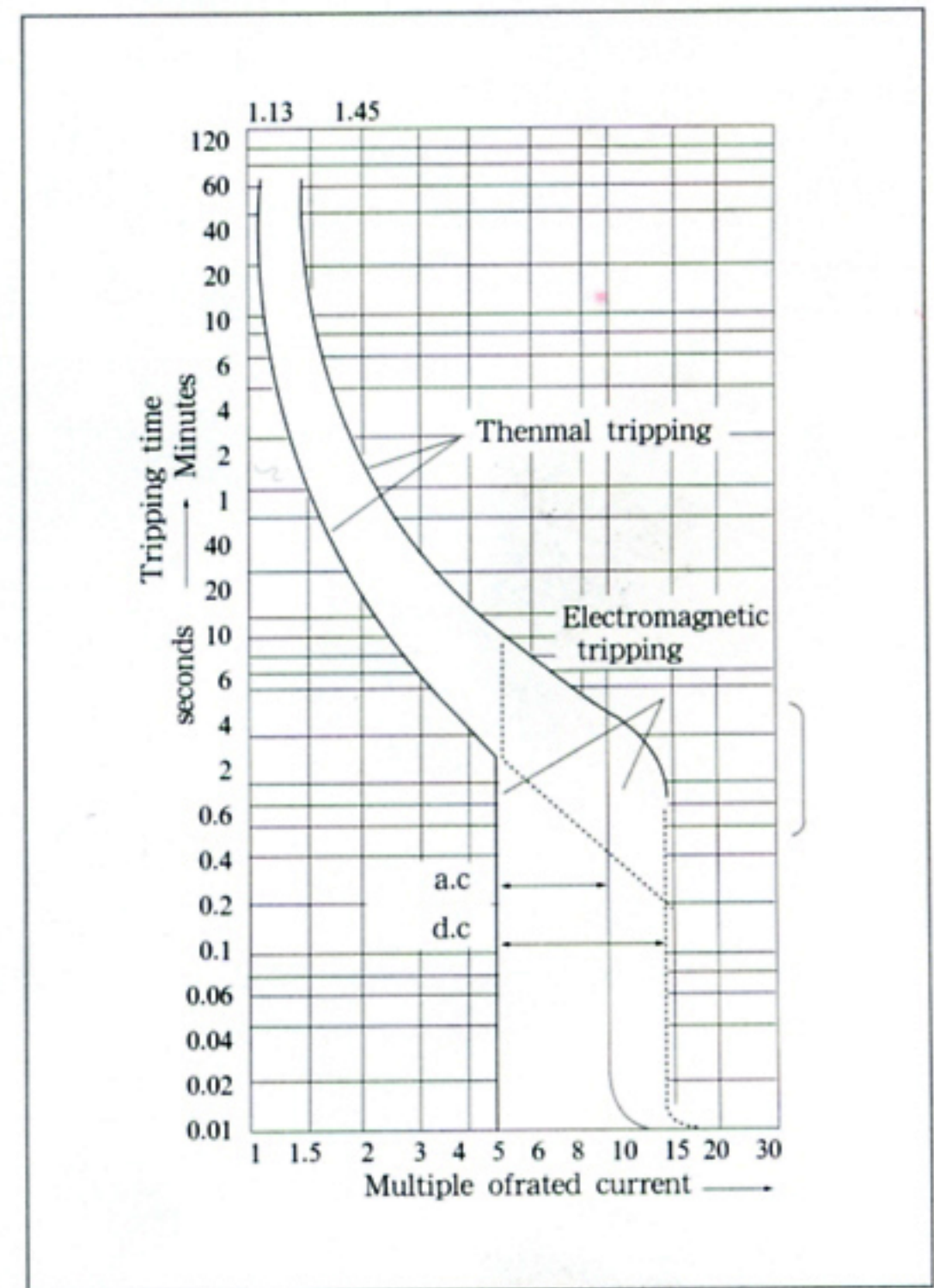


K Mini Circuit Breaking

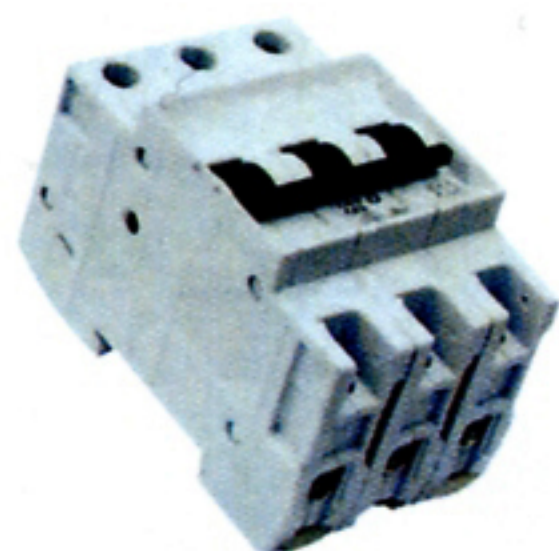
Application

K mini circuit breakers is mainly suitable for overload and short circuit protection. It is especially used for illumination and distribution in industry and commerce. It is of pleasing out-look, light weight, reliable performance, high breaking capacity, etc. Its frame and parts adopt plastics of high in flammable resistance and shock resistance for long service life. It is mainly used for overload and shout circuti protection within the circuit of AC 50/60Hz, rated voltage of single pole up to 240V, two, three or four pole up to 415V. It can also be used for an unfrequent switchover of the circuit and illumination under normal condition.

Characteristic curve



K 2P



K 3P

Technical specification

Frequency (Hz)	Rated voltage (V)	Breaking capacity (A)	Rated frame current (A)	Rated trip current (A)	No. of pole (P)
50/60	240/415V AC	3000	63	2,4,6,10,16, 20,25,32,40, 50,63	Single, Two, Three